




 **(F) Primary 3 - Term 2 (SA1) Science (ACS)** 

-  Duplicate
-  Print
-  Delete

 **Assign Test**

Test Introduction

[+ Add Introduction](#)

65 Questions (56 Points)

Question Bank: 19,439 Questions 

Test Questions **2 Test Assignments**

Question 1

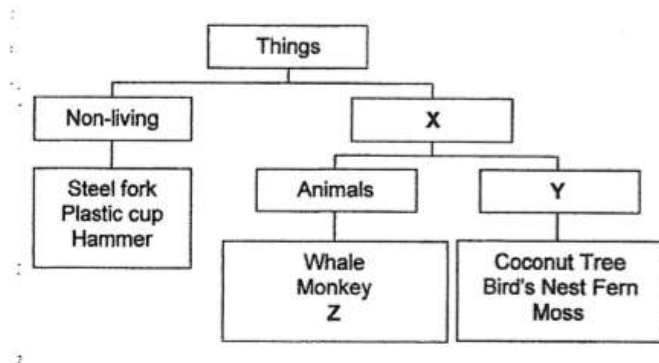
Primary 3 Science » Primary 3 Science (Term 2)

2 pts

Booklet A (56 marks)

For each question from 1 to 28, four options are given. One of them is the correct answer.

The classification chart below shows how some things were classified according to certain characteristics.



Which of the following clearly represents letters X, Y and Z?

	X	Y	Z
(1)	Living	Can reproduce	Water lily
(2)	Cannot die	Plants	Banana Tree
(3)	Living	Plants	Shark
(4)	Cannot die	Can reproduce	Cat

- A) 1
- B) 2
- C) 3
- D) 4

Question Type: Multiple Choice
Randomize Answers: No
Date Added: Wed 1st Apr 2020
Last Modified: N/A
QID#: 19,384,125

[Answers](#) | [Edit](#) | [Duplicate](#) | [Used In](#) | [Reorder](#)

[Remove From Test](#)

Question 2

Primary 3 Science » Primary 3 Science (Term 2)

2 pts

Evelyn has classified some objects as shown below.

Group A	Group B
White board	Skipping ropes
Students	Hockey sticks
Chairs	Tennis balls

Which of the following are the correct headings for Group A and Group B?

	Group A	Group B
(1)	Found in classroom	Found in PE store room
(2)	Non-living	Living
(3)	Found in living room	Found in toilet
(4)	Living	Non-living

- ✓ A) 1
 B) 2
 C) 3
 D) 4

Question Type: Multiple Choice
Randomize Answers: No
Date Added: Wed 1st Apr 2020
Last Modified: N/A
QID#: 19,384,171

[Answers](#) | [Edit](#) | [Duplicate](#) | [Used In](#) | [Reorder](#)

[Remove From Test](#)

Question 3

Primary 3 Science » Primary 3 Science (Term 2)

2 pts

Study the two groups of things below.

Group P	Group Q
Mushroom	Hibiscus plant
Bacteria	Rose plant
Rabbit	Moss

Which one of the following is true about the two groups of things?

	Group P	Group Q
(1)	Can grow	Cannot grow
(2)	Can reproduce	Cannot reproduce
(3)	Cannot make its own food	Can make its own food
(4)	Cannot respond to changes around them	Can respond to changes around them

- A) 1
 B) 2
 ✓ C) 3
 D) 4

Question Type: Multiple Choice
Randomize Answers: No
Date Added: Wed 1st Apr 2020
Last Modified: N/A
QID#: 19,384,262

[Answers](#) | [Edit](#) | [Duplicate](#) | [Used In](#) | [Reorder](#)

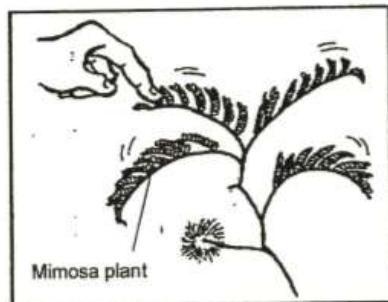
[Remove From Test](#)

Question 4

Primary 3 Science » Primary 3 Science (Term 2)

2 pts

Peter went to the field and saw some mimosa plants. After he had gently touched the leaves of the mimosa plant, the leaves folded inwards immediately.



Which of the following characteristics is shown when the leaves of the mimosa plant folded inwards?

- A) Living things are shy.
 B) Living things can die.
 ✓ C) Living things can respond to changes around them .
 D) Living things can move from one place to another by themselves.

Question Type: Multiple Choice
Randomize Answers: No
Date Added: Wed 1st Apr 2020
Last Modified: N/A
QID#: 19,384,311

[Answers](#) | [Edit](#) | [Duplicate](#) | [Used In](#) | [Reorder](#)

[Remove From Test](#)

Question 5

Primary 3 Science » Primary 3 Science (Term 2)

2 pts

Some animals are grouped as shown in the classification table below.

Group R	Group P
Horse	Owl
Sheep	Snake
Lion	Seal

These animals are grouped according to _____.

- A) what they eat
- B) where they live
- C) their outer covering
- ✓ D) how they move about

Question Type: Multiple Choice
 Randomize Answers: No
 Date Added: Wed 1st Apr 2020
 Last Modified: N/A
 QID#: 19,384,348

[Answers](#) |
 [Edit](#) |
 [Duplicate](#) |
 [Used In](#) |
 [Reorder](#)

[Remove From Test](#)

Question 6

Primary 3 Science » Primary 3 Science (Term 2)

2 pts

The table below shows the characteristics of things A and B.

Things	Does it need air?	Can it grow?	Can it fly?
A	No	No	Yes
B	Yes	Yes	Yes

Which one of the following correctly identifies A and B?

	A	B
(1)	Bird	Airplane
(2)	Helicopter	Airplane
(3)	Butterfly	Helicopter
(4)	Airplane	Bird

- A) 1
- B) 2
- C) 3

✓ D) 4

Question Type: Multiple Choice
Randomize Answers: No
Date Added: Wed 1st Apr 2020
Last Modified: N/A
QID#: 19,384,366

[Answers](#) |
 [Edit](#) |
 [Duplicate](#) |
 [Used In](#) |
 [Reorder](#)

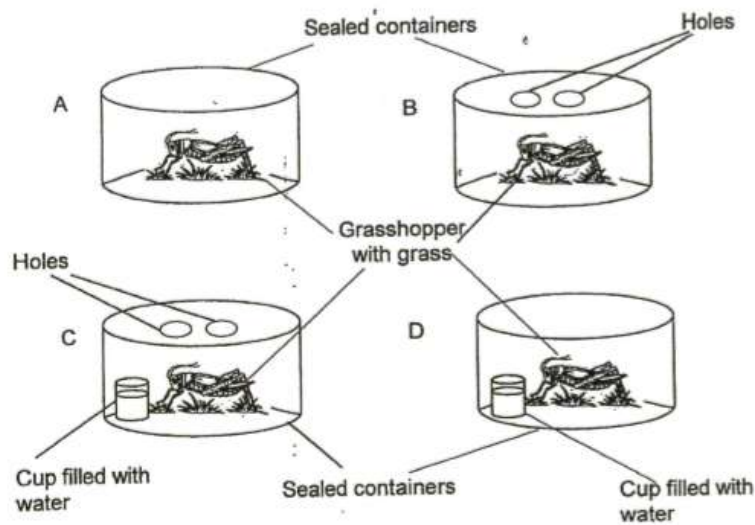
[Remove From Test](#)

Question 7

Primary 3 Science » Primary 3 Science (Term 2)

2 pts

Peter wants to conduct an experiment to find out if living things need water to survive.



Which of the two set-ups above should he use to conduct his experiment?

- A) A and B
 B) A and C
 ✓ C) B and C
 D) B and D

Question Type: Multiple Choice
Randomize Answers: No
Date Added: Wed 1st Apr 2020
Last Modified: N/A
QID#: 19,384,382

[Answers](#) |
 [Edit](#) |
 [Duplicate](#) |
 [Used In](#) |
 [Reorder](#)

[Remove From Test](#)

Question 8

Primary 3 Science » Primary 3 Science (Term 2)

2 pts

Which one of the following examples does not show the characteristics of a living thing?

- A) A dog has given birth to 5 puppies.
 B) A boy is now 5 cm taller than he was last year.

- ✓ C) A school flag is flapping when the wind blows.
- D) A girl moved her hand away after touching a hot kettle.

Question Type: Multiple Choice
Randomize Answers: No
Date Added: Wed 1st Apr 2020
Last Modified: N/A
QID#: 19,384,434

[Answers](#) | [Edit](#) | [Duplicate](#) | [Used In](#) | [Reorder](#)

[Remove From Test](#)

Question 9

Primary 3 Science » Primary 3 Science (Term 2)

2 pts

Remus has written a riddle that describes a plant. Read the riddle below carefully.

"I grow on a tree.

I cannot bear fruits.

I reproduce from spores. What am I?"

The riddle best describes a _____.

- A) Mango plant
- B) Cactus Plant
- C) Balsam plant
- ✓ D) Staghorn fern

Question Type: Multiple Choice
Randomize Answers: No
Date Added: Wed 1st Apr 2020
Last Modified: N/A
QID#: 19,384,519

[Answers](#) | [Edit](#) | [Duplicate](#) | [Used In](#) | [Reorder](#)

[Remove From Test](#)

Question 10

Primary 3 Science » Primary 3 Science (Term 2)

2 pts

How is the bird's nest fern **different** from the rose plant?



Bird's nest fern



Rose plant

- A It has leaves.
- B It reproduces from spores.
- C It cannot make its own food.

- A) A only
- ✓ B) B only
- C) A and C only

D) B and C only

Question Type: Multiple Choice
Randomize Answers: No
Date Added: Wed 1st Apr 2020
Last Modified: N/A
QID#: 19,384,546

[Answers](#) | [Edit](#) | [Duplicate](#) | [Used In](#) | [Reorder](#)

[Remove From Test](#)

Question 11

Primary 3 Science » Primary 3 Science (Term 2)

2 pts

Mrs Kang told her students to observe some plants. She then asked the students to find out where the spores were found. Four students have given their responses as shown in the table below.

Whose response is correct?

	Name of student	Where spores are found
(1)	Alan	In the roots
(2)	Beth	On the stem
(3)	Cathy	On the leaf
(4)	Daniel	On the fruit

- A) 1
B) 2
✓ C) 3
D) 4

Question Type: Multiple Choice
Randomize Answers: No
Date Added: Wed 1st Apr 2020
Last Modified: N/A
QID#: 19,384,576

[Answers](#) | [Edit](#) | [Duplicate](#) | [Used In](#) | [Reorder](#)







[Remove From Test](#)

Question 12

Primary 3 Science » Primary 3 Science (Term 2)

2 pts

Some fruits have been classified in the following groups.

Group A	Group B
 <p>Fruit A</p>	 <p>Fruit E</p>
 <p>Fruit B</p>	 <p>Fruit F</p>
 <p>Fruit C</p>	 <p>Fruit G</p>

Based on your observation, which fruit was classified wrongly?

- A) A
- B) C
- C) E
- ✓ D) G

Question Type: Multiple Choice
Randomize Answers: No
Date Added: Wed 1st Apr 2020
Last Modified: N/A
QID#: 19,384,603

[↗ Answers](#) | [✎ Edit](#) | [📄 Duplicate](#) | [📌 Used In](#) | [⬇ Reorder](#)

[Remove From Test](#)

Question 13

Primary 3 Science » Primary 3 Science (Term 2)

2 pts

Ben, Helen, Ray and Janet were having a discussion on flowering and non-flowering plants and made the following statements.

Ben: Flowering plants only grow on land.

Helen: Flowering plants can reproduce by seeds.

Ray: Non-flowering plants cannot produce fruits.

Janet: Non-flowering plants cannot respond to changes around them.

Whose statements are correct?

- A) Ben and Ray
- B) Ben and Janet
- ✓ C) Helen and Ray
- D) Helen and Janet

Question Type: Multiple Choice
Randomize Answers: No
Date Added: Wed 1st Apr 2020
Last Modified: N/A
QID#: 19,384,637

[Answers](#) | [Edit](#) | [Duplicate](#) | [Used In](#) | [Reorder](#)

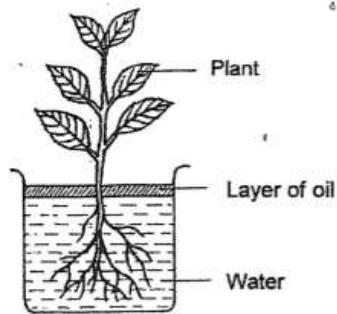
[Remove From Test](#)

Question 14

Primary 3 Science » Primary 3 Science (Term 2)

2 pts

Kenneth placed a plant in a beaker of water and left it near a window. He then added a layer of oil on the surface of the water.



What did Kenneth observe after 5 days?

- A) The plant wilted and died.
- B) The plant lost all its roots.
- ✓ C) The water level in the beaker decreased.
- D) The water level in the beaker remained the same.

Question Type: Multiple Choice
Randomize Answers: No
Date Added: Wed 1st Apr 2020
Last Modified: N/A
QID#: 19,384,687

[Answers](#) | [Edit](#) | [Duplicate](#) | [Used In](#) | [Reorder](#)

[Remove From Test](#)

Question 15

Primary 3 Science » Primary 3 Science (Term 2)

2 pts

One morning, Leroy observed that the healthy banana tree in his garden did not have any flowers. What could be the most likely possible reason for his observation?



- A) The banana plant is a non-flowering plant.
- B) The banana plant only produces fruits but not flowers
- C) The banana plant has flowers that only appear at night.
- ✓ D) The banana plant only bears flower at a specific time of the year.

Question Type: Multiple Choice
Randomize Answers: No
Date Added: Wed 1st Apr 2020
Last Modified: N/A
QID#: 19,384,719

Answers | Edit | Duplicate | Used In | Reorder

Remove From Test

Question 16

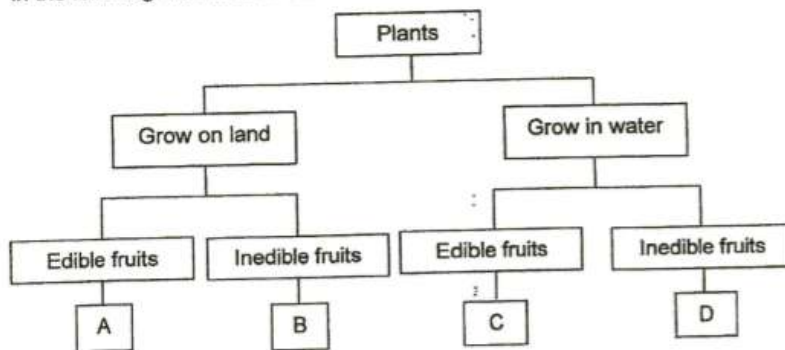
Primary 3 Science » Primary 3 Science (Term 2)

2 pts

The following table gives information on four plants, W, X, Y and Z, based on two characteristics. A tick (✓) shows that the plant has the characteristic.

Characteristics	W	X	Y	Z
Has fruits that are edible		✓		✓
Grows on land	✓			✓

From the information above, in which group, A, B, C or D, do plants W and Z belong in the following classification chart?



	Plant W	Plant Z
(1)	D	B
(2)	B	A
(3)	C	D
(4)	A	C

- A) 1
- ✓ B) 2
- C) 3
- D) 4

Question Type: Multiple Choice
Randomize Answers: No
Date Added: Wed 1st Apr 2020

Last Modified: N/A
QID#: 19,384,736

[Answers](#) | [Edit](#) | [Duplicate](#) | [Used In](#) | [Reorder](#)

[Remove From Test](#)

Question 17

Primary 3 Science » Primary 3 Science (Term 2)

2 pts

Which of the following statements about flowering plants is true?

- A) Only plants with flowers can make their own food
- B) Only plants with green leaves can make their own food.
- ✓ C) Plants with leaves of any colours can make their own food.
- D) Plants that reproduce from spores cannot make their own food.

Question Type: Multiple Choice
Randomize Answers: No
Date Added: Wed 1st Apr 2020
Last Modified: N/A
QID#: 19,384,757

[Answers](#) | [Edit](#) | [Duplicate](#) | [Used In](#) | [Reorder](#)

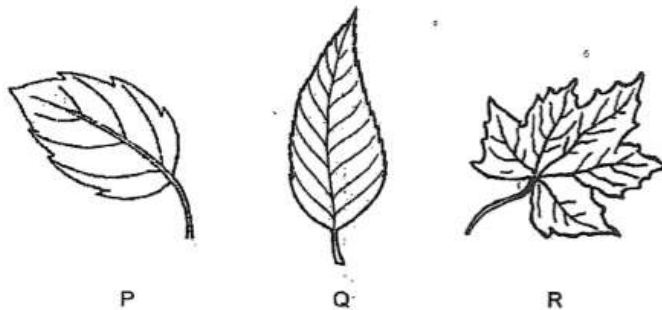
[Remove From Test](#)

Question 18

Primary 3 Science » Primary 3 Science (Term 2)

2 pts

The diagram below shows three leaves, P, Q and R.



Based on your observation, which of the following description(s) of the leaves is/are correct?

- A They are palm-shaped.
 - B They are heart-shaped.
 - C They have jagged edges.
 - D They have smooth edges.
- ✓ A) C only
 - B) A and C only
 - C) A, B and D only
 - D) B, C and D only

Question Type: Multiple Choice
Randomize Answers: No
Date Added: Wed 1st Apr 2020
Last Modified: N/A
QID#: 19,384,775

[Answers](#) |
 [Edit](#) |
 [Duplicate](#) |
 [Used In](#) |
 [Reorder](#)

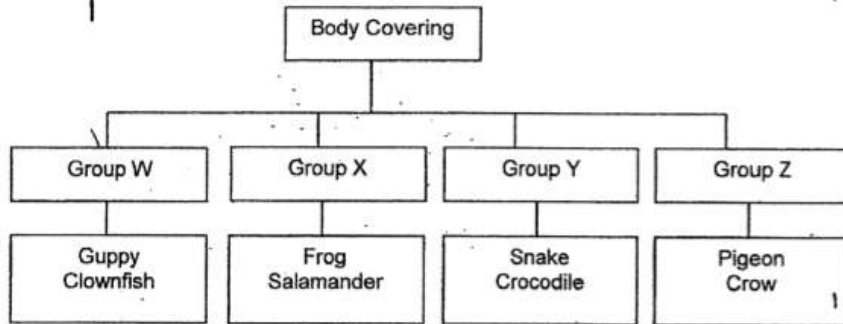
[Remove From Test](#)

Question 19

Primary 3 Science » Primary 3 Science (Term 2)

2 pts

Study the classification chart below.



In which group does a toad belong to?

- A) Group W
- ✓ B) Group X
- C) Group Y
- D) Group Z

Question Type: Multiple Choice
Randomize Answers: No
Date Added: Wed 1st Apr 2020
Last Modified: N/A
QID#: 19,384,790

[Answers](#) |
 [Edit](#) |
 [Duplicate](#) |
 [Used In](#) |
 [Reorder](#)

[Remove From Test](#)

Question 20

Primary 3 Science » Primary 3 Science (Term 2)

2 pts

Which of the following is not an insect?

A)



✓ B)



C)



D)



Question Type: Multiple Choice
Randomize Answers: No
Date Added: Wed 1st Apr 2020
Last Modified: N/A
QID#: 19,384,824

[Answers](#) | [Edit](#) | [Duplicate](#) | [Used In](#) | [Reorder](#)

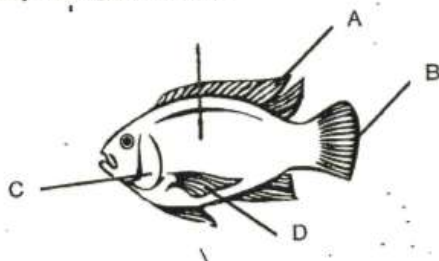
[Remove From Test](#)

Question 21

Primary 3 Science » Primary 3 Science (Term 2)

2 pts

Study the organism below.



Which of the parts shown above help the organism to swim?

- A) B and C only
- B) A and D only
- ✓ C) A, B and D only
- D) All of the above

Question Type: Multiple Choice
Randomize Answers: No
Date Added: Wed 1st Apr 2020
Last Modified: N/A
QID#: 19,384,866

[Answers](#) | [Edit](#) | [Duplicate](#) | [Used In](#) | [Reorder](#)

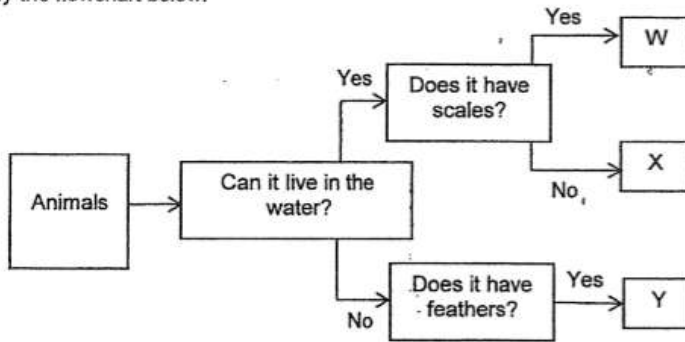
[Remove From Test](#)

Question 22

Primary 3 Science » Primary 3 Science (Term 2)

2 pts

Study the flowchart below.



Which one of the following correctly represents the group of animals W,X and Y belong to?

	Bird	Amphibian	Fish
(1)	Y	X	W
(2)	W	Y	X
(3)	Y	W	X
(4)	X	Y	W

- ✓ A) 1
 B) 2
 C) 3
 D) 4

Question Type: Multiple Choice
Randomize Answers: No
Date Added: Wed 1st Apr 2020
Last Modified: N/A
QID#: 19,384,881

[Answers](#) | [Edit](#) | [Duplicate](#) | [Used In](#) | [Reorder](#)

[Remove From Test](#)

Question 23

Primary 3 Science » Primary 3 Science (Term 2)

2 pts

The picture shows an ostrich.



- A It is a bird as it has a beak.
- B It is a bird as it has feathers.
- C It is not a bird as it cannot fly.
- D It is not a bird as it can run very fast.

Which of the above statements are true of an ostrich?

- A) D only
- ✓ B) A and B only
- C) C and D only
- D) A, B and C only

Question Type: Multiple Choice
Randomize Answers: No
Date Added: Wed 1st Apr 2020
Last Modified: N/A
QID#: 19,384,899

[↶ Answers](#) | [✎ Edit](#) | [📄 Duplicate](#) | [📌 Used In](#) | [⬇ Reorder](#)

[Remove From Test](#)

Question 24

Primary 3 Science » Primary 3 Science (Term 2)

2 pts

Several children observed Animal X and made the following statements.

Andy: It lays eggs.

Alan: It has a long tail.

John: It has moist skin.

Mark: It can also breathe with lungs.

Which animal group does Animal X most likely belong to?

- A) Fish
- B) Mammal
- C) Reptile
- ✓ D) Amphibian

Question Type: Multiple Choice
Randomize Answers: No
Date Added: Wed 1st Apr 2020
Last Modified: N/A
QID#: 19,384,927

Question 25

Primary 3 Science » Primary 3 Science (Term 2)

2 pts

Study the animals below.



House Lizard



Frog

Which of the following is true for house lizard but **false** for frog?

- A) Can live in water only.
- B) Reproduce by laying eggs.
- ✓ C) Have dry skin covered with scales.
- D) Have a constant body temperature.

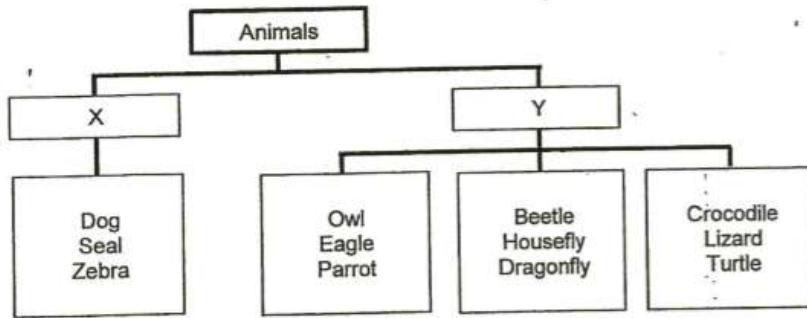
Question Type: Multiple Choice
Randomize Answers: No
Date Added: Wed 1st Apr 2020
Last Modified: N/A
QID#: 19,384,947

Question 26

Primary 3 Science » Primary 3 Science (Term 2)

2 pts

Study the classification chart below.



Which of the following can be the sub-headings X and Y be?

	X	Y
A	Give birth to young alive	Lay eggs
B	Have an outer covering of hair	Do not have an outer covering of hair
C	Have a constant body temperature	Do not have a constant body temperature
D	Suckle their young	Do not suckle their young

- A) B and C only
 B) C and D only
 ✓ C) A, B and D only
 D) All of the above

Question Type: Multiple Choice
Randomize Answers: No
Date Added: Wed 1st Apr 2020
Last Modified: N/A
QID#: 19,384,967

[Answers](#) | [Edit](#) | [Duplicate](#) | [Used In](#) | [Reorder](#)

[Remove From Test](#)

Question 27

Primary 3 Science » Primary 3 Science (Term 2)

2 pts

Jason found an animal in a garden and he wanted to find out if it is an insect. What must he do to ensure that it is an insect?

- A) Measure the length of the animal.
 B) Find out whether the animal has wings.
 C) Observe whether the animal lays eggs.
 ✓ D) Find out the number of body parts the animal has.

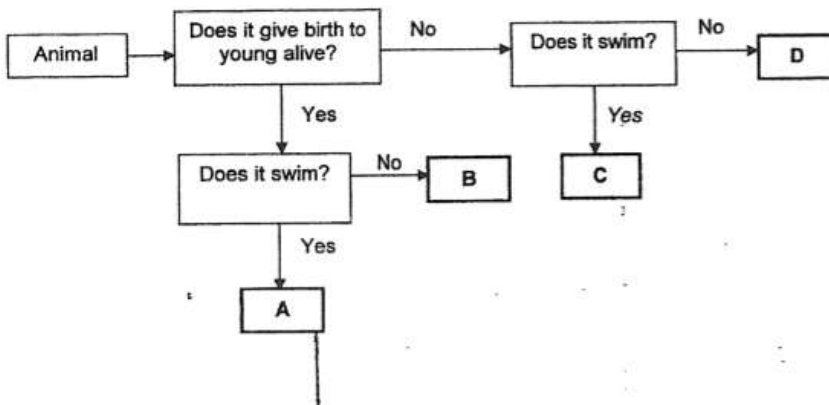
Question Type: Multiple Choice
Randomize Answers: No
Date Added: Wed 1st Apr 2020
Last Modified: N/A
QID#: 19,384,991

Question 28

Primary 3 Science » Primary 3 Science (Term 2)

2 pts

Study the flow chart below.



Which of the following letters represent a penguin?

- A) A
 B) B
 ✓ C) C
 D) D

Question Type: Multiple Choice
Randomize Answers: No
Date Added: Wed 1st Apr 2020
Last Modified: N/A
QID#: 19,385,008

Question 29

Primary 3 Science » Primary 3 Science (Term 2)

0 pts

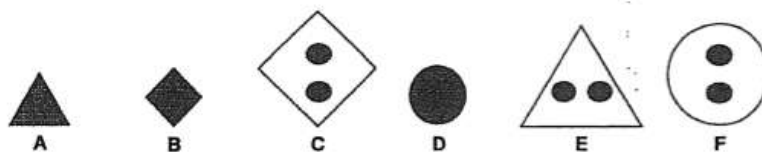
Booklet B

For questions 29 to 41, write your answers in a paper.

This question is designed for extended answers that parent/ teacher will have to assign and guide child to attempt after the test has been completed.

Grading: This question type is not graded on this system and will not affect the final score as it was designed in such a way that it requires manual assistance.

Mrs Lee gave six figures, A, B, C, D, E and F, to Jerry as shown below.



State one characteristic that Jerry could use to classify the 6 figures into 2 groups so that there is an equal number of figures in each group.

Question Type: Essay
Date Added: Thu 2nd Apr 2020
Last Modified: N/A
QID#: 19,416,956

Correctly answered feedback

By their size

Incorrectly answered feedback

By their size

[Answers](#) | [Edit](#) | [Duplicate](#) | [Used In](#) | [Reorder](#)

[Remove From Test](#)**Question 30**

Primary 3 Science » Primary 3 Science (Term 2)

0 pts

Mrs Lee asked Jerry to use another characteristic to **regroup** the six figures into **2 groups** with an **equal number** of figures in each group. How could Jerry regroup the six figures? Write the letters (A, B, C, D, E and F) in the boxes provided. [

Group 1	Group 2
<input type="text"/>	<input type="text"/>
<input type="text"/>	<input type="text"/>
<input type="text"/>	<input type="text"/>

(With reference to

previous question)

Question Type: Essay
Date Added: Thu 2nd Apr 2020
Last Modified: N/A
QID#: 19,417,000

Correctly answered feedback

Group 1: A, B, D
 Group 2: C, E, F

Incorrectly answered feedback

Group 1: A, B, D
 Group 2: C, E, F

[Answers](#) | [Edit](#) | [Duplicate](#) | [Used In](#) | [Reorder](#)

[Remove From Test](#)**Question 31**

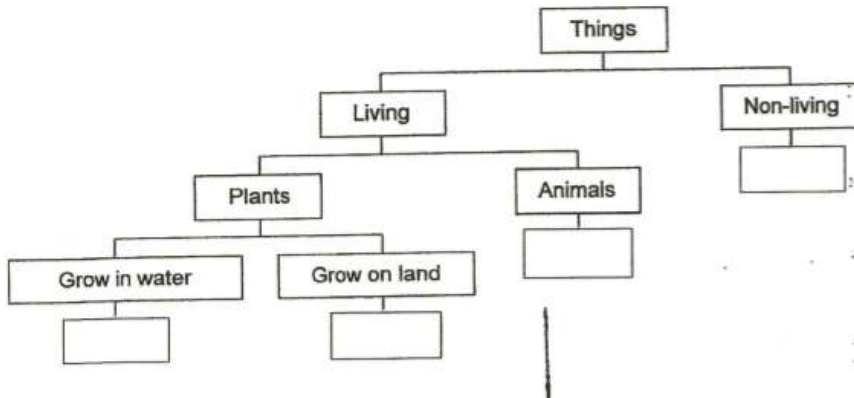
Primary 3 Science » Primary 3 Science (Term 2)

0 pts

The table below gives information about four things based on some characteristics. A tick (✓) shows that the thing has the characteristic.

Characteristic	Thing			
	P	Q	R	S
Needs air, food and water to survive	✓	✓		✓
Can be found inside the pond	✓		✓	✓
Can reproduce and can die	✓	✓		✓
Can make its own food	✓	✓		

Fill in the boxes with the letter P, Q, R or S in the classification table below.



Question Type: Essay
Date Added: Thu 2nd Apr 2020
Last Modified: N/A
QID#: 19,417,047

Correctly answered feedback

Grow in water: P/ Grow on land: Q/ Animals: S/ Non-living: R

Incorrectly answered feedback

Grow in water: P/ Grow on land: Q/ Animals: S/ Non-living: R

[Answers](#) | [Edit](#) | [Duplicate](#) | [Used In](#) | [Reorder](#)

[Remove From Test](#)

Question 32

Primary 3 Science » Primary 3 Science (Term 2)

0 pts

With reference to the previous question, name a thing that has the same characteristics as Q.

Question Type: Essay
Date Added: Thu 2nd Apr 2020
Last Modified: N/A
QID#: 19,417,056

Correctly answered feedback

Sunflower

Incorrectly answered feedback

Sunflower

Question 33

Primary 3 Science » Primary 3 Science (Term 2)

0 pts

William observed and classified some things into 2 groups as shown in the table below.

Group X	Group Y
Cockroach	Fork
Elephant	Spoon
Mushroom	Sharpener
Fern	Eraser

Based on the information above, answer the following questions:

Give a suitable headings for Group X and Group Y.

Group X: _____

Group Y: _____

Question Type: Essay

Date Added: Thu 2nd Apr 2020

Last Modified: N/A

QID#: 19,417,096

Correctly answered feedback

Group X: Living things

Group Y: Non-living things

Incorrectly answered feedback

Group X: Living things

Group Y: Non-living things

Question 34

Primary 3 Science » Primary 3 Science (Term 2)

0 pts

Classify the things in Group X in the table below based on the given headings.

Mammal	Insect	Fungi	Plant

Question Type: Essay

Date Added: Thu 2nd Apr 2020

Last Modified: N/A

QID#: 19,417,132

Correctly answered feedback

Mammal	Insect	Fungi	Plant
Elephant	Cockroach	Mushroom	Fern

Incorrectly answered feedback

Mammal	Insect	Fungi	Plant
Elephant	Cockroach	Mushroom	Fern

[Answers](#) |
 [Edit](#) |
 [Duplicate](#) |
 [Used In](#) |
 [Reorder](#)

[Remove From Test](#)

Question 35

Primary 3 Science » Primary 3 Science (Term 2)

0 pts

Help William to classify the objects in Group Y into 2 groups in the table below based on the headings provided.

Found in a pencil case	Found in the kitchen

Question Type: Essay
Date Added: Thu 2nd Apr 2020
Last Modified: N/A
QID#: 19,417,142

Correctly answered feedback

Found in pencil case	Found in kitchen
Sharpener, Eraser	Fork, Spoon

Incorrectly answered feedback

Found in pencil case	Found in kitchen
Sharpener, Eraser	Fork, Spoon

[Answers](#) |
 [Edit](#) |
 [Duplicate](#) |
 [Used In](#) |
 [Reorder](#)

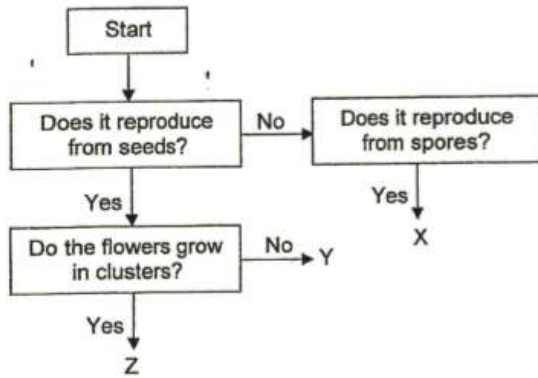
[Remove From Test](#)

Question 36

Primary 3 Science » Primary 3 Science (Term 2)

0 pts

Study the flow chart which shows the characteristics of some plants.



Based on the flow chart, state all the characteristics of Z.

Question Type: Essay
Date Added: Thu 2nd Apr 2020
Last Modified: N/A
QID#: 19,417,156

Correctly answered feedback

It reproduces by seeds and its flowers grow in clusters.

Incorrectly answered feedback

It reproduces by seeds and its flowers grow in clusters.

[Answers](#) | [Edit](#) | [Duplicate](#) | [Used In](#) | [Reorder](#)

[Remove From Test](#)

Question 37

Primary 3 Science » Primary 3 Science (Term 2)

0 pts

Based on the flow chart, state a difference between X and Y.

Question Type: Essay
Date Added: Thu 2nd Apr 2020
Last Modified: N/A
QID#: 19,417,174

Correctly answered feedback

Y reproduces by seeds while X reproduces by spores.

Incorrectly answered feedback

Y reproduces by seeds while X reproduces by spores.

[Answers](#) | [Edit](#) | [Duplicate](#) | [Used In](#) | [Reorder](#)

[Remove From Test](#)

Question 38

Primary 3 Science » Primary 3 Science (Term 2)

0 pts

The diagram below shows an Ixora plant.



Which letter, X, Y or Z, in the flow chart above represents the Ixora plant?

(with reference to the previous flow chart)

Question Type: Essay
Date Added: Thu 2nd Apr 2020
Last Modified: N/A
QID#: 19,417,196

Correctly answered feedback

Z

Incorrectly answered feedback

Z

[Answers](#) | [Edit](#) | [Duplicate](#) | [Used In](#) | [Reorder](#)

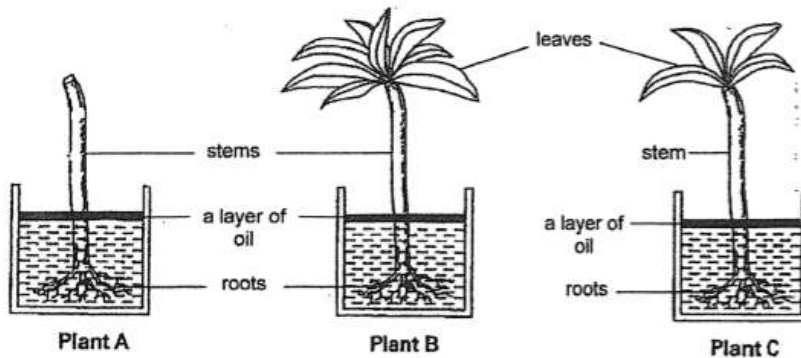
[Remove From Test](#)

Question 39

Primary 3 Science » Primary 3 Science (Term 2)

0 pts

James used three similar plants, A, B and C, to conduct an experiment. He removed all the leaves from Plant A, and some leaves from Plant C. He then placed each plant in a container filled with 700 ml of water as shown in the diagram below.



After 3 days, James measured the amount of the water in each container. The table below shows the amount of water left in each container.

Amount of water left after 3 days (ml)		
A	B	C
695	520	580

Based on the results in the table, state if each of the following statement is 'True', 'False' or 'Not possible to tell' by putting a tick in the correct box.

	Statement	True	False	Not possible to tell
(i)	Plant C took in the greatest amount of water.			
(ii)	Plant A took in less water than plant B.			

Question Type: Essay
Date Added: Thu 2nd Apr 2020
Last Modified: Sat 30th May 2020
QID#: 19,417,228

Correctly answered feedback

i: False | ii: False

Incorrectly answered feedback

i: False | ii: False

[Answers](#) | [Edit](#) | [Duplicate](#) | [Used In](#) | [Reorder](#)

[Remove From Test](#)

Question 40

Primary 3 Science » Primary 3 Science (Term 2)

0 pts

After 1 week, James recorded his observations of the three plants in the table below.

Plants	Observations
A	It died.
B	All the leaves are still green and healthy.
C	Only a few leaves are still green and healthy.

Why did plant B grow the best?

Question Type: Essay
Date Added: Thu 2nd Apr 2020
Last Modified: N/A
QID#: 19,417,240

Correctly answered feedback

Plant need leaves to make food and plant B has the most leaves.

Incorrectly answered feedback

Plant need leaves to make food and plant B has the most leaves.

[Answers](#) | [Edit](#) | [Duplicate](#) | [Used In](#) | [Reorder](#)

[Remove From Test](#)

Question 41

Primary 3 Science » Primary 3 Science (Term 2)

0 pts

The table below shows the different conditions in his experiment. Put a tick in the correct box(es) to indicate the condition(s) he should keep the same in order to carry out a fair experiment.

Conditions	Keep the same
Amount of roots	
Type of plant used	
Location of the plants	
Number of leaves on the plant	

Question Type: Essay
Date Added: Thu 2nd Apr 2020
Last Modified: N/A
QID#: 19,417,272

Correctly answered feedback

Conditions	Keep the same
Amount of roots	✓
Type of plant used	✓
Location of the plants	✓
Number of leaves on the plant	

Incorrectly answered feedback

Conditions	Keep the same
Amount of roots	✓
Type of plant used	✓
Location of the plants	✓
Number of leaves on the plant	

[Answers](#) | [Edit](#) | [Duplicate](#) | [Used In](#) | [Reorder](#)

[Remove From Test](#)

Question 42

Primary 3 Science » Primary 3 Science (Term 2)

0 pts

Study the two fruits based on the characteristics given in the table below.



Papaya



Lychee

Compare the two fruits based on the characteristics given in the table below.

Characteristics	Papaya	Lychee
Texture of outer covering		
Number of seeds		

Question Type: Essay
 Date Added: Thu 2nd Apr 2020
 Last Modified: N/A
 QID#: 19,417,302

Correctly answered feedback

Characteristics	Papaya	Lychee
Texture of outer covering	Smooth	Rough
Number of seeds	Many	One

Incorrectly answered feedback

Characteristics	Papaya	Lychee
Texture of outer covering	Smooth	Rough
Number of seeds	Many	One

[Answers](#) |
 [Edit](#) |
 [Duplicate](#) |
 [Used In](#) |
 [Reorder](#)

[Remove From Test](#)

Question 43

Primary 3 Science » Primary 3 Science (Term 2)

0 pts

The diagram below shows a watermelon.



Which fruit is the watermelon similar to, papaya or lychee? Explain why.

Question Type: Essay
Date Added: Thu 2nd Apr 2020
Last Modified: N/A
QID#: 19,417,318

Correctly answered feedback

Papaya. It has more than one seed and has a smooth skin.

Incorrectly answered feedback

Papaya. It has more than one seed and has a smooth skin.

[Answers](#) | [Edit](#) | [Duplicate](#) | [Used In](#) | [Reorder](#)

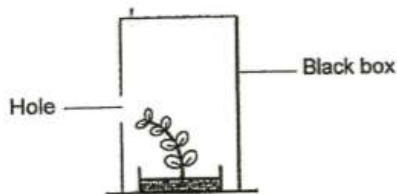
[Remove From Test](#)

Question 44

Primary 3 Science » Primary 3 Science (Term 2)

0 pts

Jason placed a plant which was growing upright in a black box that has a hole on the left side. After 2 days, he noticed that the plant grew towards the left as shown in the diagram below.



Which characteristics of living things does the experiment show?

Question Type: Essay
Date Added: Thu 2nd Apr 2020
Last Modified: N/A
QID#: 19,417,347

Correctly answered feedback

Living things respond to changes in their surroundings.

Incorrectly answered feedback

Living things respond to changes in their surroundings.

[Answers](#) | [Edit](#) | [Duplicate](#) | [Used In](#) | [Reorder](#)

[Remove From Test](#)

Question 45

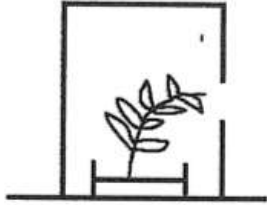
Primary 3 Science » Primary 3 Science (Term 2)

0 pts

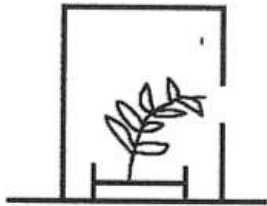
With reference to the previous question, draw how the same plant will most likely look after a few days when he placed it in a black box with a hole on the right.

Question Type: Essay
Date Added: Thu 2nd Apr 2020
Last Modified: N/A
QID#: 19,417,405

Correctly answered feedback



Incorrectly answered feedback



[Answers](#) | [Edit](#) | [Duplicate](#) | [Used In](#) | [Reorder](#)

[Remove From Test](#)

Question 46

Primary 3 Science » Primary 3 Science (Term 2)

0 pts

Nathan planted a seed in a pot with soil and placed it near the window in his room to receive sunlight. He then observed the seed growing into a plant over 8 weeks. He measured and recorded the height of the plant over 8 weeks in the table as shown below.

Week	Height (cm)
1	2
2	3
3	7
4	10
5	13
6	?
7	19
8	22

Based on the results in the table, what would be the height of the plant in week 6?

The height of the plant in week 6 would be _____ cm.

Question Type: Essay
Date Added: Thu 2nd Apr 2020
Last Modified: Sat 30th May 2020
QID#: 19,417,425

Correctly answered feedback

16 cm

Incorrectly answered feedback

16 cm

[Answers](#) | [Edit](#) | [Duplicate](#) | [Used In](#) | [Reorder](#)[Remove From Test](#)**Question 47**

Primary 3 Science » Primary 3 Science (Term 2)

0 pts

With reference to the previous question, state the characteristics of living thing that the plant shows.

Question Type: Essay**Date Added:** Thu 2nd Apr 2020**Last Modified:** N/A**QID#:** 19,417,443**Correctly answered feedback**

Living things can grow.

Incorrectly answered feedback

Living things can grow.

[Answers](#) | [Edit](#) | [Duplicate](#) | [Used In](#) | [Reorder](#)[Remove From Test](#)**Question 48**

Primary 3 Science » Primary 3 Science (Term 2)

0 pts

After week 8, Nathan went on a trip with his entire family for 2 weeks and there was no one at home during that time. When Nathan returned home, he observed that the plant withered and died at the same location. What could be a likely reason for the plant to die?

Question Type: Essay**Date Added:** Thu 2nd Apr 2020**Last Modified:** N/A**QID#:** 19,417,465**Correctly answered feedback**

It did not have enough water to survive.

Incorrectly answered feedback

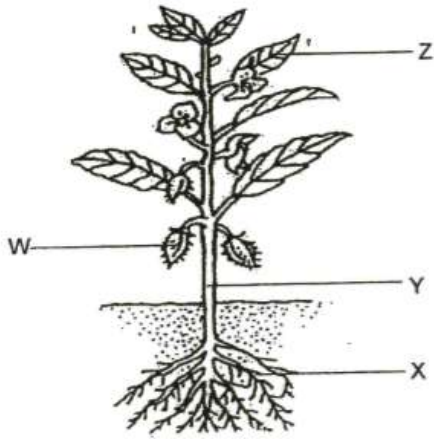
It did not have enough water to survive.

[Answers](#) | [Edit](#) | [Duplicate](#) | [Used In](#) | [Reorder](#)[Remove From Test](#)**Question 49**

Primary 3 Science » Primary 3 Science (Term 2)

0 pts

The diagram below shows a plant with different parts, W, X, Y and Z.



Name the parts of the plant in the table below.

Letter	Name of the part of the plant
W	
X	
Y	
Z	

Question Type: Essay
 Date Added: Thu 2nd Apr 2020
 Last Modified: N/A
 QID#: 19,417,492

Correctly answered feedback

Letter	Name of the part of the plant
W	Fruit
X	Root
Y	Stem
Z	Leaf

Incorrectly answered feedback

Letter	Name of the part of the plant
W	Fruit
X	Root
Y	Stem
Z	Leaf

Question 50

Primary 3 Science » Primary 3 Science (Term 2)

0 pts

Why are plants important to the survival of other living things?

Question Type: Essay
Date Added: Thu 2nd Apr 2020
Last Modified: N/A
QID#: 19,417,505

Correctly answered feedback

Living things feed on plants directly or indirectly.

Incorrectly answered feedback

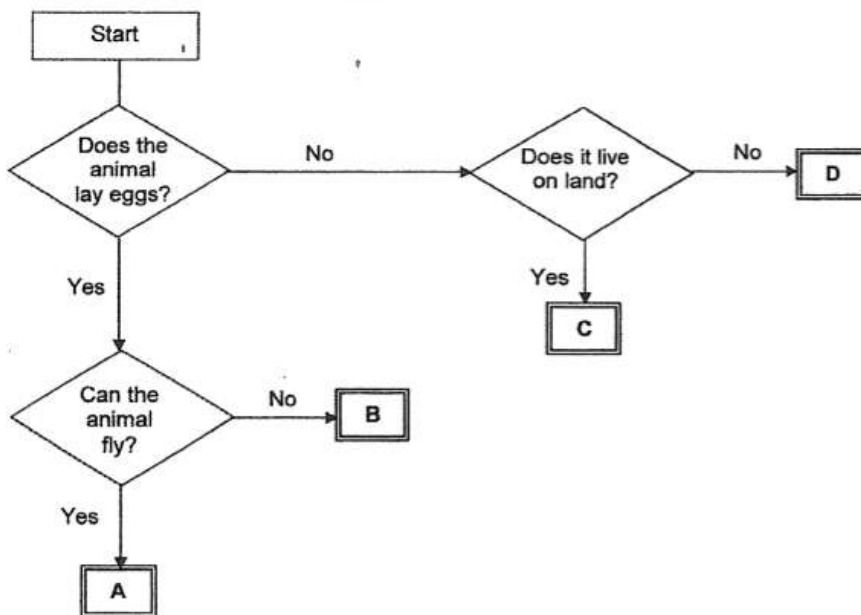
Living things feed on plants directly or indirectly.

Question 51

Primary 3 Science » Primary 3 Science (Term 2)

0 pts

Study the flow chart on animals A, B, C and D.



Based on the flow chart, which animal A, B, C, D is most likely an Eagle?

Question Type: Essay
Date Added: Thu 2nd Apr 2020
Last Modified: N/A
QID#: 19,417,537

Correctly answered feedback

A

Incorrectly answered feedback

A

[Answers](#) | [Edit](#) | [Duplicate](#) | [Used In](#) | [Reorder](#)[Remove From Test](#)

Question 52

Primary 3 Science » Primary 3 Science (Term 2)

0 pts

Based on the flow chart, state two characteristics of Animal D.

Question Type: Essay
Date Added: Thu 2nd Apr 2020
Last Modified: N/A
QID#: 19,417,549

Correctly answered feedback

It does not lay eggs and does not live on land.

Incorrectly answered feedback

It does not lay eggs and does not live on land.

[Answers](#) | [Edit](#) | [Duplicate](#) | [Used In](#) | [Reorder](#)[Remove From Test](#)

Question 53

Primary 3 Science » Primary 3 Science (Term 2)

0 pts

Give an example of animal B.

Question Type: Essay
Date Added: Thu 2nd Apr 2020
Last Modified: N/A
QID#: 19,417,559

Correctly answered feedback

Frog

Incorrectly answered feedback

Frog

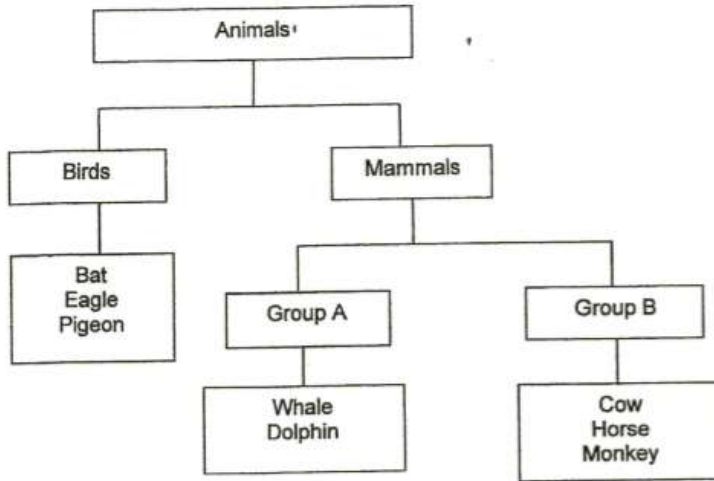
[Answers](#) | [Edit](#) | [Duplicate](#) | [Used In](#) | [Reorder](#)[Remove From Test](#)

Question 54

Primary 3 Science » Primary 3 Science (Term 2)

0 pts

Study the classification chart given below.



Which one of the animals is classified wrongly?

Question Type: Essay
Date Added: Thu 2nd Apr 2020
Last Modified: N/A
QID#: 19,417,575

Correctly answered feedback

Bat

Incorrectly answered feedback

Bat

[Answers](#) | [Edit](#) | [Duplicate](#) | [Used In](#) | [Reorder](#)

[Remove From Test](#)

Question 55

Primary 3 Science » Primary 3 Science (Term 2)

0 pts

With reference to the previous question, explain clearly based on its characteristics why the animal you chose in (a) is classified wrongly? [Do not compare the animal group they belong to]

Question Type: Essay
Date Added: Thu 2nd Apr 2020
Last Modified: N/A
QID#: 19,417,605

Correctly answered feedback

Bats have hair as an outer covering and they give birth to their young alive.

Incorrectly answered feedback

Bats have hair as an outer covering and they give birth to their young alive.

[Answers](#) | [Edit](#) | [Duplicate](#) | [Used In](#) | [Reorder](#)

[Remove From Test](#)

Question 56

Primary 3 Science » Primary 3 Science (Term 2)

0 pts

Give suitable sub-headings for Group A and Group B.

Group A : _____

Group B : _____

Question Type: Essay
Date Added: Thu 2nd Apr 2020
Last Modified: N/A
QID#: 19,417,624

Correctly answered feedback

Group A: Live in water/ Group B: Live on land

Incorrectly answered feedback

Group A: Live in water/ Group B: Live on land

[Answers](#) | [Edit](#) | [Duplicate](#) | [Used In](#) | [Reorder](#)

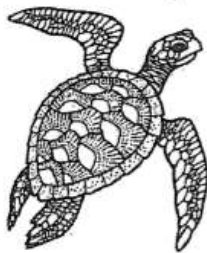
[Remove From Test](#)

Question 57

Primary 3 Science » Primary 3 Science (Term 2)

0 pts

Observe animals E and F carefully.



Animal E



Animal F

How do animal E and F reproduce?

Question Type: Essay
Date Added: Thu 2nd Apr 2020
Last Modified: N/A
QID#: 19,417,642

Correctly answered feedback

They lay eggs.

Incorrectly answered feedback

They lay eggs.

[Answers](#) | [Edit](#) | [Duplicate](#) | [Used In](#) | [Reorder](#)

[Remove From Test](#)

Question 58

Primary 3 Science » Primary 3 Science (Term 2)

0 pts

With reference to the previous question, based on your observation, state one similarity between animal E and animal F.

Question Type: Essay
Date Added: Thu 2nd Apr 2020
Last Modified: N/A
QID#: 19,417,655

Correctly answered feedback

They have an outer covering of scales.

Incorrectly answered feedback

They have an outer covering of scales.

[Answers](#) | [Edit](#) | [Duplicate](#) | [Used In](#) | [Reorder](#)

[Remove From Test](#)

Question 59

Primary 3 Science » Primary 3 Science (Term 2)

0 pts

With reference to the previous question, state one difference between animal E and animal F.

Question Type: Essay
Date Added: Thu 2nd Apr 2020
Last Modified: N/A
QID#: 19,417,674

Correctly answered feedback

Animal E has four flippers while animal F does not have any flippers.

Incorrectly answered feedback

Animal E has four flippers while animal F does not have any flippers.

[Answers](#) | [Edit](#) | [Duplicate](#) | [Used In](#) | [Reorder](#)

[Remove From Test](#)

Question 60

Primary 3 Science » Primary 3 Science (Term 2)

0 pts

Study Animal Y below.



Animal Y

Based on your observation, which animal group does Animal Y belong to?

Question Type: Essay
Date Added: Thu 2nd Apr 2020
Last Modified: N/A
QID#: 19,417,697

Correctly answered feedback

Insects

Incorrectly answered feedback

Insects

[Answers](#) | [Edit](#) | [Duplicate](#) | [Used In](#) | [Reorder](#)

[Remove From Test](#)**Question 61**

Primary 3 Science » Primary 3 Science (Term 2)

0 pts

State two reasons for your answer in the previous question.

Question Type: Essay
Date Added: Thu 2nd Apr 2020
Last Modified: N/A
QID#: 19,417,707

Correctly answered feedback

It has six legs and three main body parts.

Incorrectly answered feedback

It has six legs and three main body parts.

[Answers](#) | [Edit](#) | [Duplicate](#) | [Used In](#) | [Reorder](#)

[Remove From Test](#)**Question 62**

Primary 3 Science » Primary 3 Science (Term 2)

0 pts

With reference to the previous question, name the outer covering of Animal Y. State its function.

Question Type: Essay
Date Added: Thu 2nd Apr 2020
Last Modified: N/A
QID#: 19,417,724

Correctly answered feedback

Exoskeleton. It protects the insect's soft body.

Incorrectly answered feedback

Exoskeleton. It protects the insect's soft body.

[Answers](#) | [Edit](#) | [Duplicate](#) | [Used In](#) | [Reorder](#)

[Remove From Test](#)**Question 63**

Primary 3 Science » Primary 3 Science (Term 2)

0 pts

The diagram below shows a spider.



Does the spider belong to the same animal group as Animal Y?
 Give a reason for your answer.

(with reference to the previous

question)

Question Type: Essay
Date Added: Thu 2nd Apr 2020
Last Modified: N/A
QID#: 19,417,743

Correctly answered feedback

No. It has more than six legs and Animal Y only has six legs.

Incorrectly answered feedback

No. It has more than six legs and Animal Y only has six legs.

[Answers](#) | [Edit](#) | [Duplicate](#) | [Used In](#) | [Reorder](#)

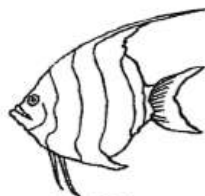
[Remove From Test](#)

Question 64

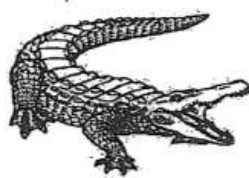
Primary 3 Science » Primary 3 Science (Term 2)

0 pts

The pictures below show an angelfish and a crocodile.



Angelfish



Crocodile

What animal group do the Angelfish and Crocodile belong to?

Angelfish: _____

Crocodile: _____

Question Type: Essay
Date Added: Thu 2nd Apr 2020
Last Modified: N/A
QID#: 19,417,774

Correctly answered feedback

Angelfish: Fish/ Crocodile: Reptile

Incorrectly answered feedback

Angelfish: Fish/ Crocodile: Reptile

[Answers](#) | [Edit](#) | [Duplicate](#) | [Used In](#) | [Reorder](#)

[Remove From Test](#)

Question 65

Primary 3 Science » Primary 3 Science (Term 2)

0 pts

Based on the characteristics of the animal groups that the angelfish and crocodile belong to, state two similarities between the angelfish and the crocodile.

(with reference to the
 previous question)

Question Type: Essay
Date Added: Thu 2nd Apr 2020

Last Modified: N/A
QID#: 19,417,793

Correctly answered feedback

They lay eggs.
They have an outer covering of scales.

Incorrectly answered feedback

They lay eggs.
They have an outer covering of scales.

[Answers](#) | [Edit](#) | [Duplicate](#) | [Used In](#) | [Reorder](#)

[Remove From Test](#)